



Equipping Employers and Benefits Advisors with Deep, Immediate Insights

Springbuk provides innovative benefits leaders with the analytics and insights they need to sharpen strategies, improve member health, and contain costs.

We extend beyond traditional data warehousing and analytics to help you unlock the data's potential and maximize the value of employee health investments through data curation and direction.

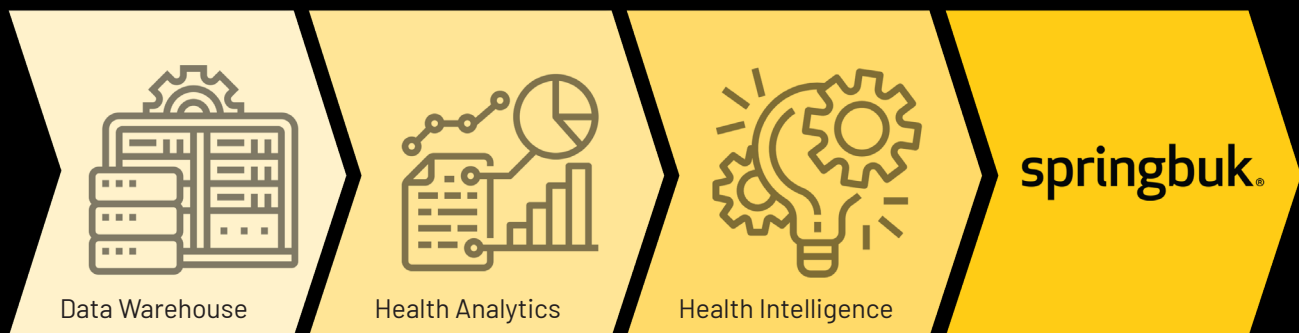
The foundation of the Springbuk platform is our data warehouse. Layered on top are deep analytics and AI-driven health intelligence, all delivered in an intuitive, easy-to-understand-and-use platform design.

Through the integrated analytics capabilities woven into the Springbuk platform, **we can tie all your data points together, allowing you to understand the true utilization and health trends in your population.**



More than a data warehouse. **More** than analytics.

Springbuk Health Intelligence puts your data to work providing immediate insights that sharpen your strategies, improve health, and contain costs.



What Sets the Springbuk Health Intelligence Platform Apart?

- **Data Security:** Springbuk holds the [HITRUST Risk-based, 2-year Certification](#), the highest standard of information protection certifications. In addition, Springbuk has achieved third-party validated SOC 2 Type 2 compliance every year since 2017.
- **Immediate Actionable Insights:** [Springbuk Insights™](#) enables users to understand the biggest opportunities for a population immediately, and [Springbuk Activate](#) matches employers with tailored partners based on your own data, showing savings opportunities and program engagement insights.
- **Intuitive Access to Data:** Need to evaluate a potential plan design change? Just type your question into [Springbuk Answers™](#), a curated search tool that uses natural language processing (NLP) to equip you with the information needed to make decisions with confidence.
- **Data Connect:** Springbuk's Data Connect provides end users with direct access to health benefits data, that has been cleansed and enriched by Springbuk, using the visualization tool that you prefer.
- **Integrated Analytics:** Springbuk integrates all of your data – from medical, Rx, disability, insurance premiums, HSA/FSA, 401(k), and more into one place, then layers on insights to provide direction in a unified, single view.
- **Team of Experts:** The Springbuk team of implementation specialists, client success managers, clinicians, and data scientists will work with you from day one to craft a strategic plan and offer guidance to identify strategies that mitigate cost and drive positive impact for employees' health.

Innovation has been, and will continue to be, at the core of everything we do at Springbuk. Now is the time to empower employers, worksite clinics, and digital health partners to identify the right benefit programs and participants to maximize the investment in their population health management systems.



See for Yourself

To learn more about the Springbuk platform and receive a personalized walk-through, contact your [Account Executive](#).